



**Western Regional  
Enterprise Network**

**Connecting Western NS  
Update for the Municipality  
of the District of Argyle**

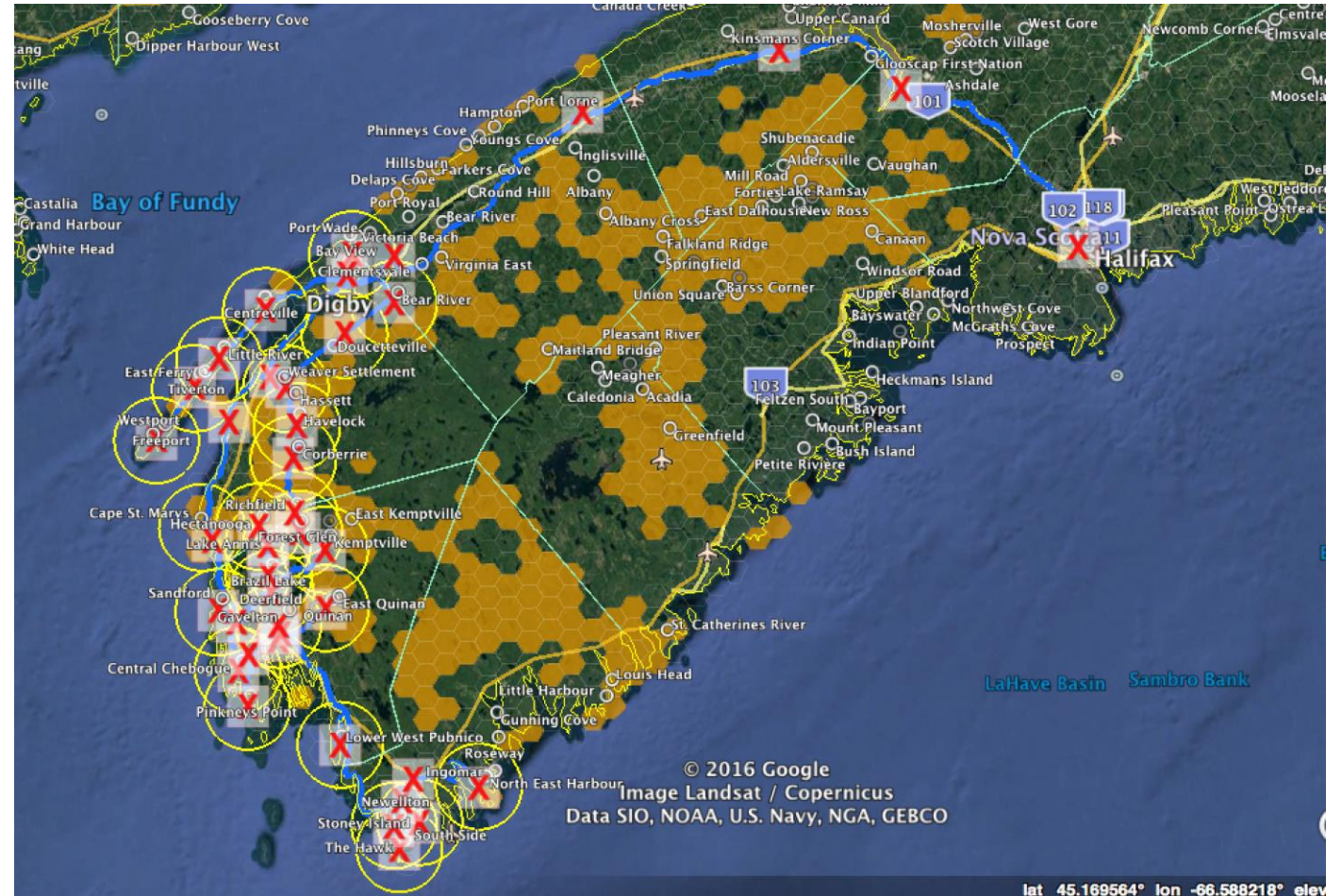
January 29, 2019

# Agenda

- Previous Vision
- Funding Sources
- Provincial Updates
- MoDA Present Situation
- Eastlink Proposed Solution
- Bell Proposed Solution

# Previous Vision

- 787 km of backbone
- 28 wireless towers
- 25mbps+
- Cost \$19.5 million
- Did not receive funding



# Funding Sources

- Canadian Radio-television and Telecommunications Commission (CRTC)
  - \$750 million for Canada, over 5 years
- Investing in Canada
  - \$828 million for Nova Scotia
    - \$105 million eligible for “improved broadband”
- Provincial Internet Funding Trust
  - \$192 million
    - Estimated to be 40-66% of required funds



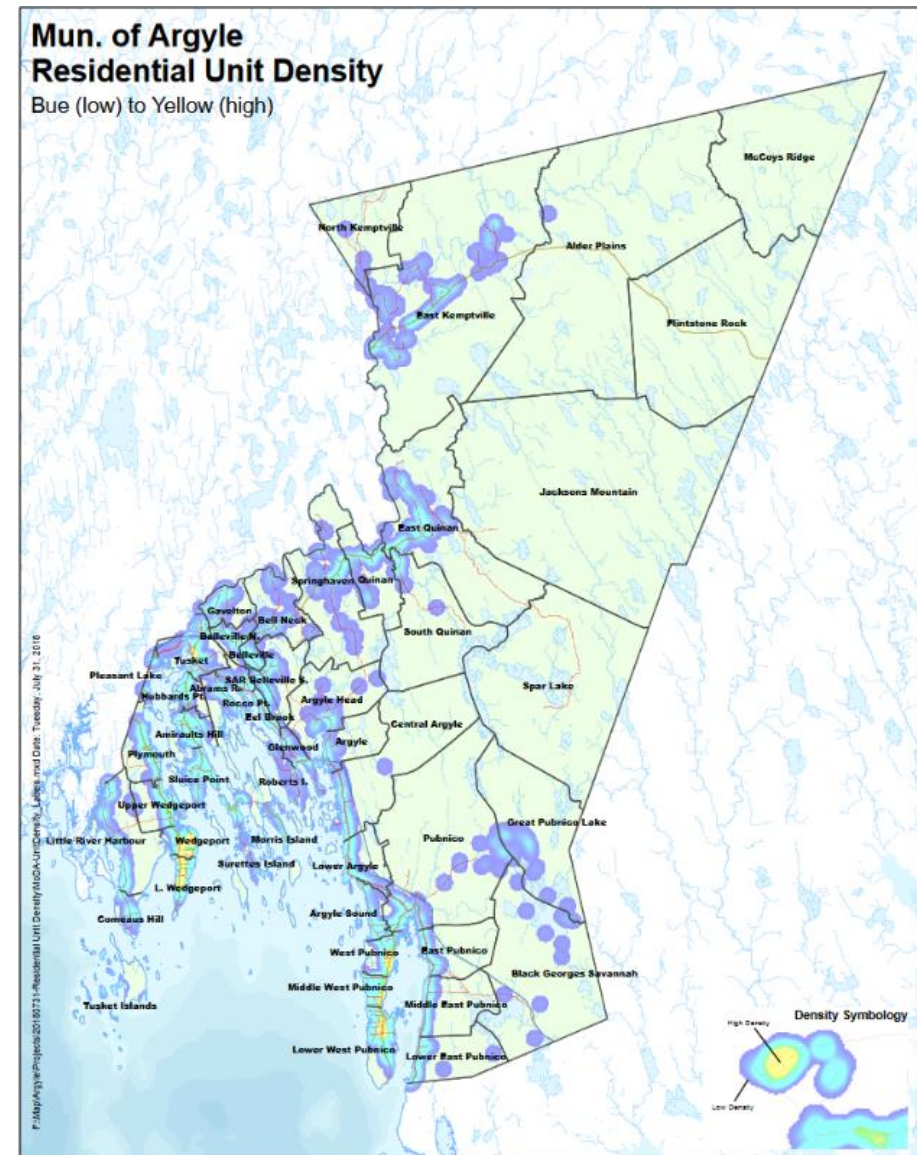
# Provincial Updates

- Brightstar Reports – Middle Mile + Last Mile Strategies
  - \$300-500 million problem for NS
    - *Utilizing existing infrastructure*
  - Targets:
    - Wired 50 Mbps+, wireless 25 Mbps+
    - 95+% coverage target
- \$192 million to NS Rural Internet Trust
  - Pre-qualification RFP closes March 2019
    - Financials / Skills / Experience
  - RFP TBA, likely Spring / Summer
  - Build within next 2-5 years



# MoDA

- Municipality of the District of Argyle
  - 4,660 premises
  - Existing Eastlink Coverage
    - --% wired
    - --% within 300-1000ft (\$ upgrades available)
    - --% outside wired, with wireless coverage
  - Existing Bell Coverage
    - --% wired



# Eastlink Proposed Solution

- --% presently wired
  - --% Wireless
- Additional -- premises
  - --% -> --%
- Will leave -- unserved
- Cost of \$--
- Eastlink Contribution of \$--
- \$-- Remaining

*Eastlink Map and numbers are confidential, and will be displayed to council in camera*

# Bell Proposed Solution

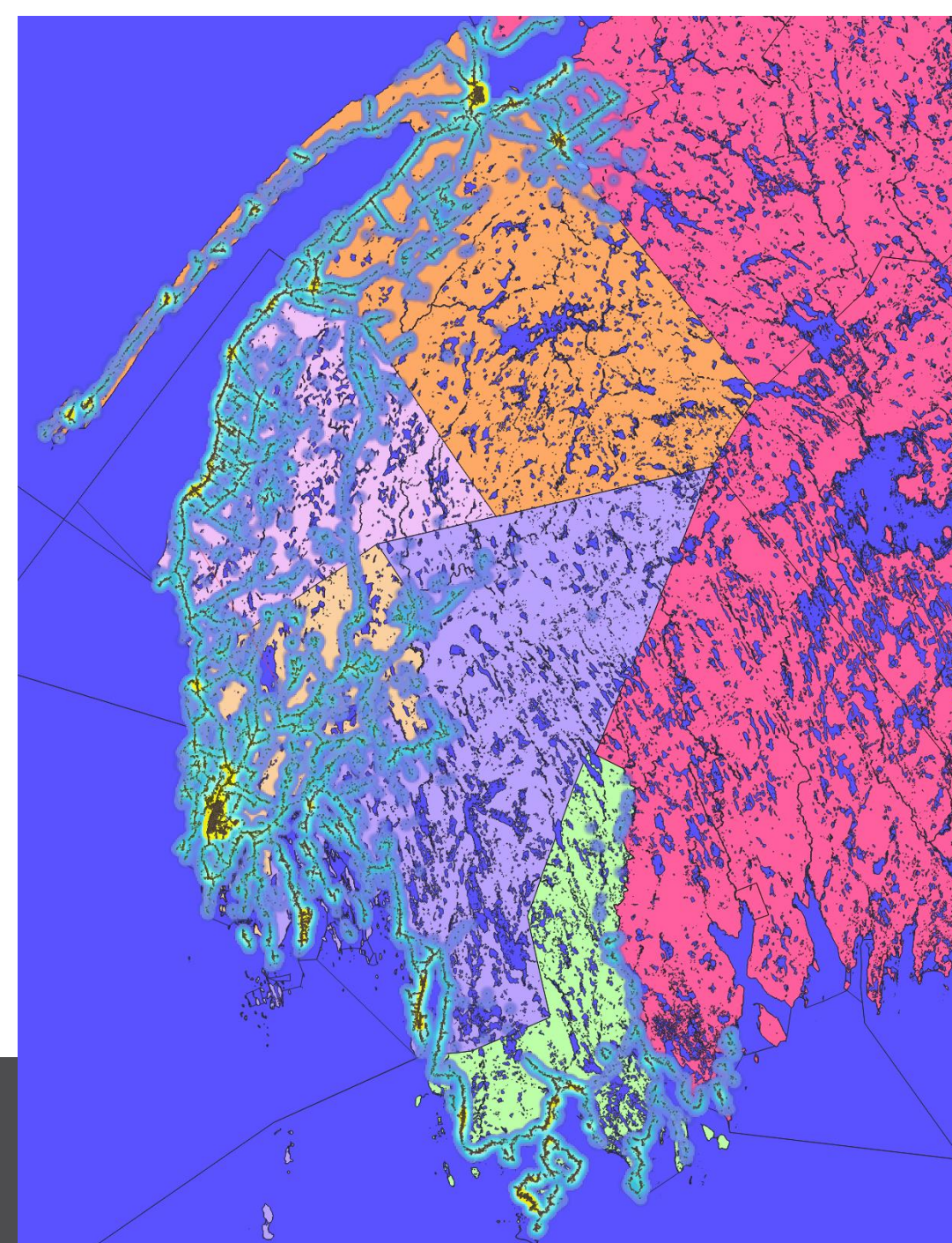
- --% presently wired
- Additional -- premises
  - --% -> --%
  - Will leave -- unserved
  - Cost of \$--
  - Bell Contribution of \$--
  - \$-- Remaining

*Bell Map and numbers are confidential, and will be displayed to council in camera*



# Solution Summary

	Bell	Eastlink
Wired	--% wired	--% wired
Unserved	--	--
Contribution	\$--	\$--
Total Cost	\$--	\$--
Final Cost	\$--	\$--
Speeds	1 Gbps	0.4 – 1 Gbps
Data cap	n/a	Varies
Wireless	50/10 Mbps	10/1 Mbps





**Western Regional**  
Enterprise Network

368 Main Street, Suite 220 Yarmouth, NS

[www.westernren.ca](http://www.westernren.ca) | 902-8813008 | [wren@westernren.ca](mailto:wren@westernren.ca)