



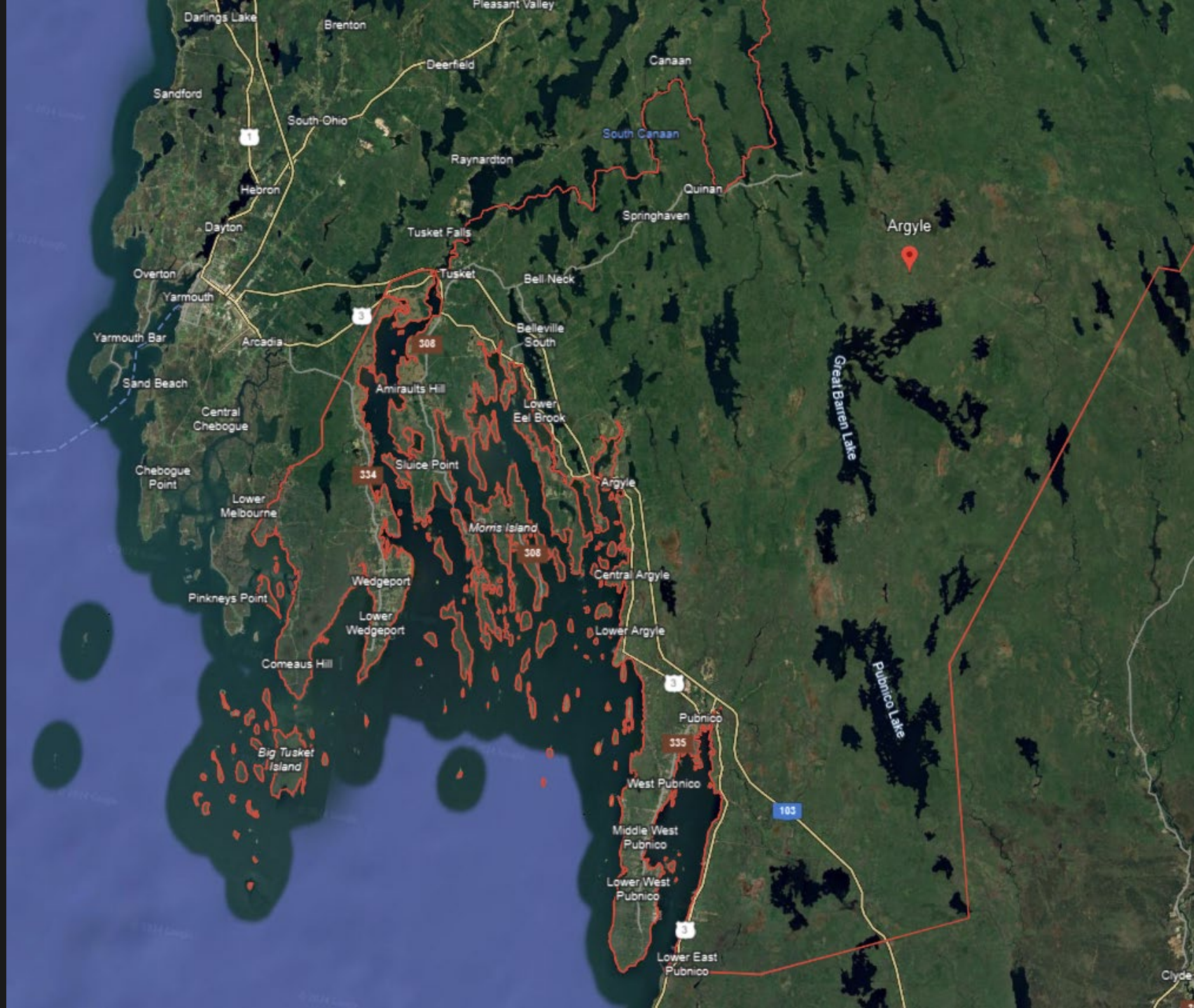
PREPARED FOR THE MUNICIPALITY
OF THE DISTRICT OF ARGYLE

PLYMOUTH SCHOOL TO NEWELL ROAD MULTI-USE PATH

Community Engagement
Session

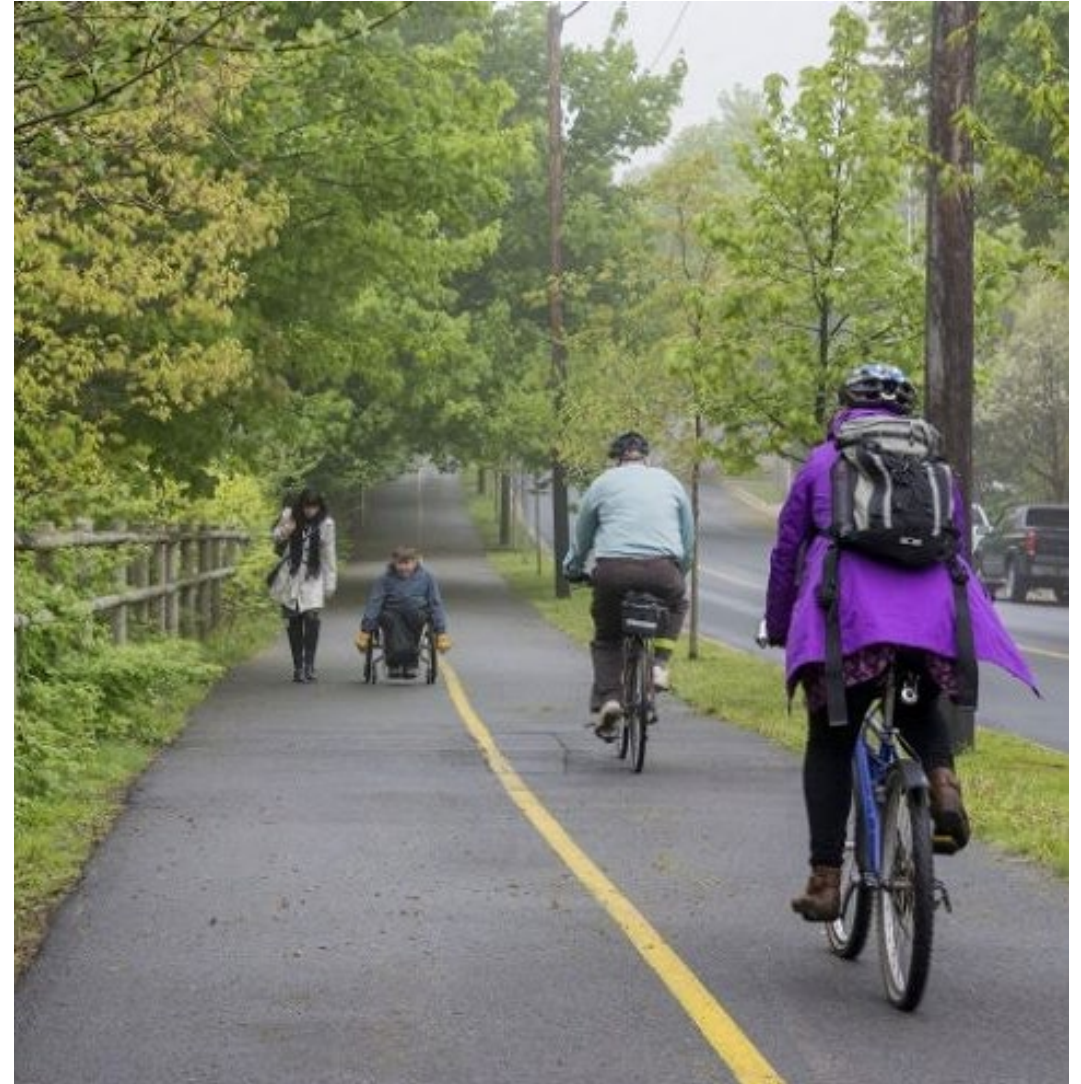


2024-12-03



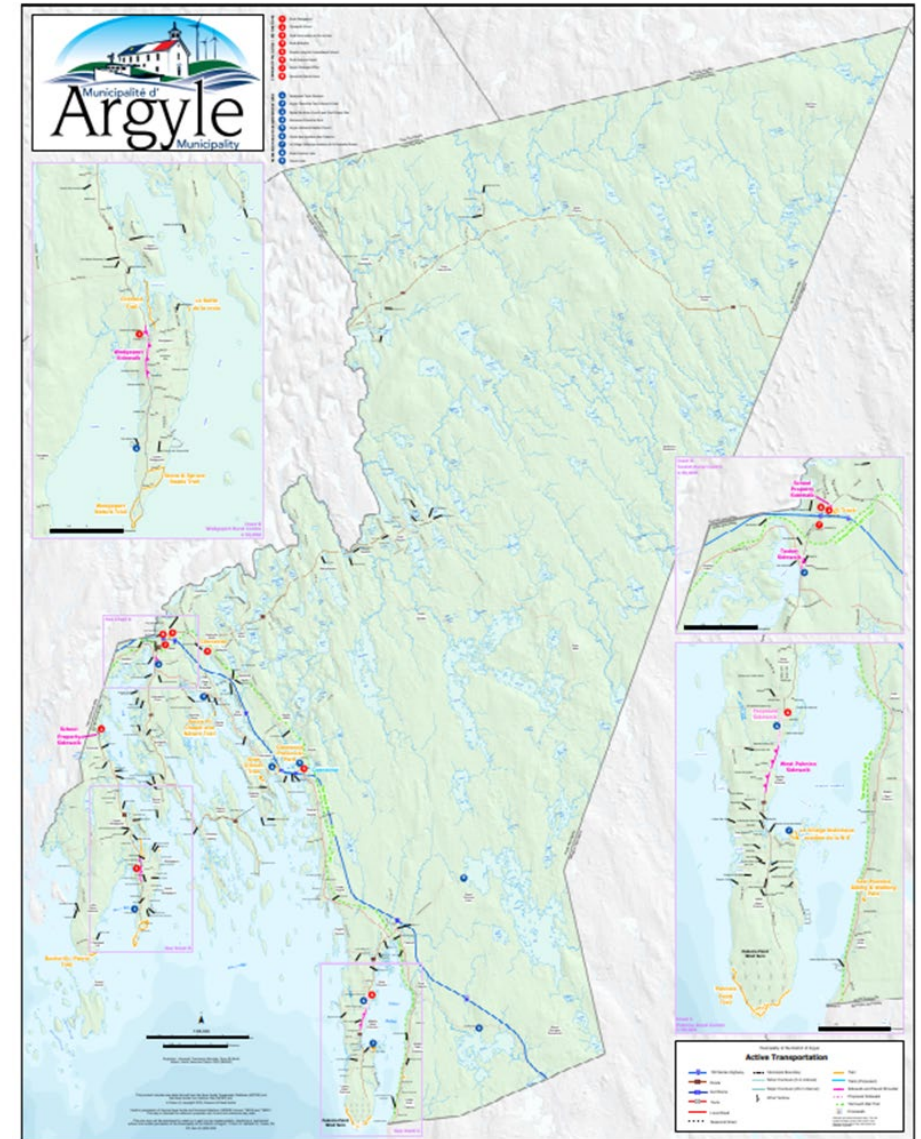
PROJECT BACKGROUND

- › The purpose of this project is to develop a concept designs for a multi-use path (MUP) between Plymouth School and Newel Road
- › Engage with the community for input on the design, locations and uses of the proposed MUP
- › The goals of the project are to develop a design which:
 - Provides a separated pathway for walking, cycling, and jogging.
 - Connect Plymouth School and Plymouth Hall with residents along highway 334.
 - Keep pedestrians out of travel lanes.
 - Provide high-visibility crossings where required.



Argyle - Active Transportation Plan

- › Provides guidance on priority active transportation projects over the next 10 years
- › Developed using input from community engagement
- › Focus on pedestrian infrastructure (sidewalks, MUP's, etc.)
- › Recommendations included creation of a functional plan for an active transportation connection between Plymouth school and Newel road
- › See “Argyle Active Transportation Plan Amendments” for additional short- and long-term recommendations



Existing Conditions

› Route 334:

- Speed limit 70km/hr
- Speed limit at school 50km/hr
- Narrow shoulders
- Gravel driveways
- Large volume of truck traffic
- 20m right of way, with 3.4m-3.6m travel lanes
- Limited space in some areas for new MUP
- Most housing is on the same side of the road as the school

› Existing infrastructure within right-of-way including utility poles, vegetation, driveway culverts, etc.



MUP Alignment Options

Option 1 – MUP on West side of Rte. 334

- › Requires Road crossing at or near school
- › Road crossings at both ends of Newell Rd
- › Fewer driveway crossings
- › Less impact to existing properties



Option 2 – MUP on East side of Rte. 334

- › Same side of road as school
- › Road Crossing's at both ends of Sims Rd.
- › More driveway crossings
- › Impacts to a greater number of properties
- › Safer access to MUP for most homes



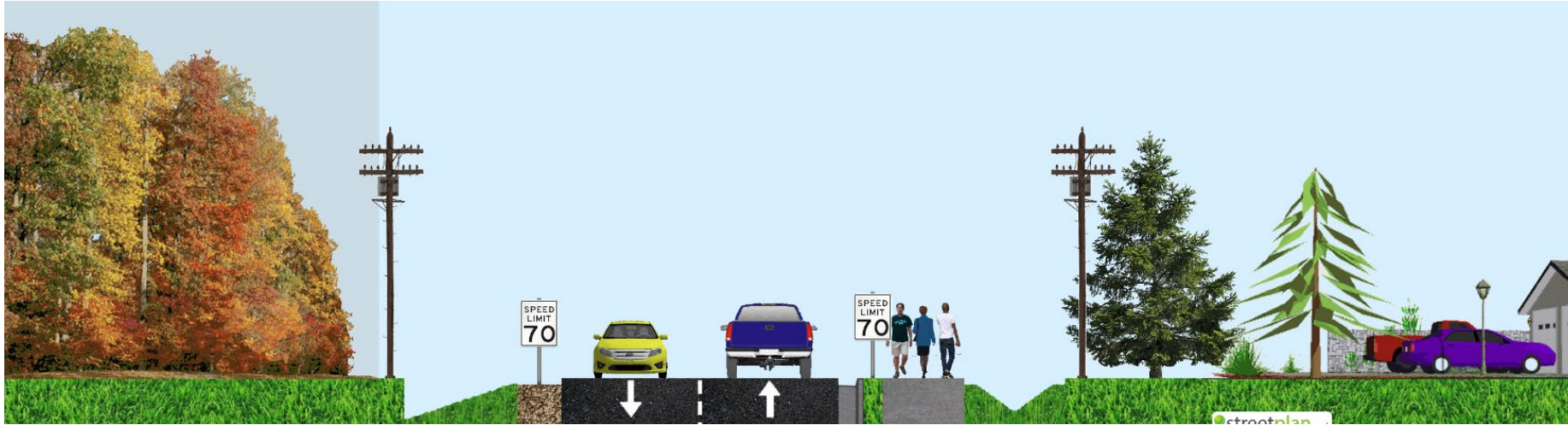
Option 3 - MUP on East side of Rte. 334 follows Sims Rd

- › Similar to Option 2
- › Follows Sims Rd, removing the need for two road crossings

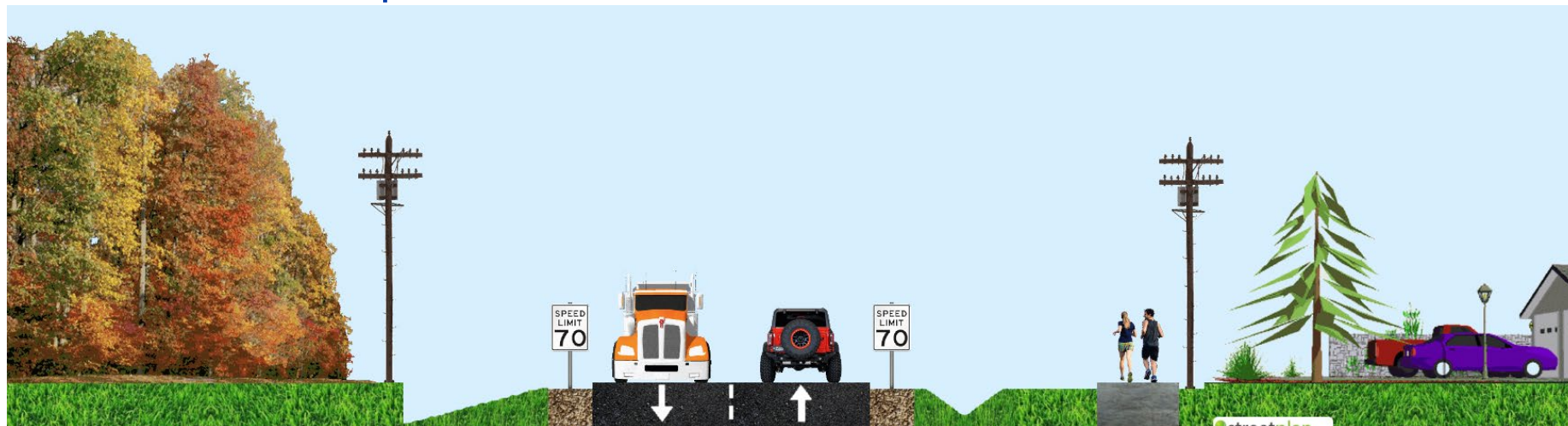


Cross Section Options

Option A – 2m wide MUP adjacent to road separated by curb and boulevard



Option B – 2m to 3m wide MUP behind ditch



Option A – 2m wide MUP adjacent to road separated by curb and boulevard

PROS

- › Lesser impact on properties as less of the right of way will be used
- › Continuous grade to match elevation of roadway

CONS

- › Less separation between traffic and pedestrians
- › Requires additional storm water infrastructure
- › More disruptive to Rte. 334 during construction

Option B – 2m to 3m wide MUP behind ditch

PROS

- › Greater separation between pedestrians and traffic
- › Possibility of wider path depending on property and obstacle constraints

CONS

- › Greater impact on properties as more of the right of way will be used
- › Grade changes required at driveway and road crossings.

Next Steps

Review community expectations, preferences, suggestions and concerns received at this meeting and use it as a baseline for selection of a preliminary preferred alignment and configuration for the MUP considering safety and environmental sensitivities.



Develop 'What We Heard Report #1' (Summary of this meeting).



Detailed Site Assessment for the Selected MUP Alignment



Develop 30% Design Submission



Present 30% Design for additional feedback at a 2nd Stakeholder and Community Engagement (anticipated for January 2025)

We Want Your Feedback!



Please give us your input on the options developed for the proposed MUP. What do you like most about each, what do you like least? Please give us your feedback!

Provide your comments on the sheets available, or online, at:

<https://munargyle.com/community-engagement-plymouth-school-connection-trail.html>

